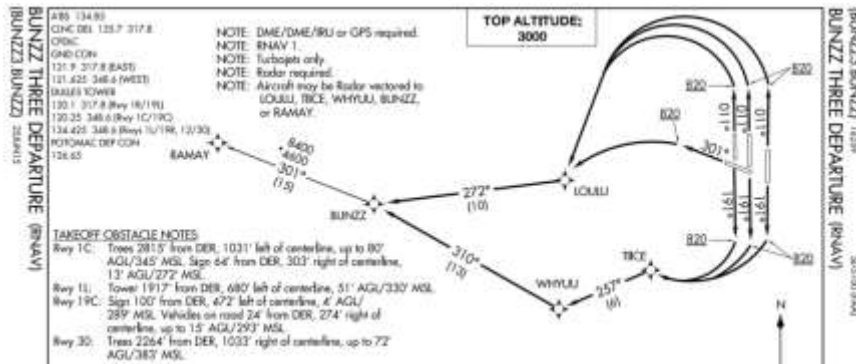


CREATING A FLIGHTPLAN

- 1) Go to iFlightPlanner.com <http://www.iflightplanner.com/>
- 2) Select Simple Flight Planning option
- 3) Enter a flight plan as follows and Press GO
 - a. Departure Airport KIAD
 - b. Departure Procedure – BUNZZ THREE (Departing Runway 30, LOULU, BUNZZ, RAMAY)



- c. Enroute HACKS – ROD
- d. Standard Arrival Procedure - WATSN THREE



- e. Arrival Airport KORD

Double check: the flightplan should look like:

KIAD LOULU BUNZZ RAMAY HACKS ROD FWA SPANN DAIFE WATSN HAUPO MKITA PRISE HULLS
STYLE DWEEB VOGLR CENAK KORD

- 4) Complete Navigation Log below (all but last two columns)

Assume

- True Airspeed 115 mph (Note: the free website defaults to a GA aircraft with 115 mph. If you were flying a jet, the TAS would be much higher)
- No winds aloft

SYST 460 Homework

Waypoint	Distance between Waypoint (nm)	Cumulative Distance (nm)	True Heading	Time between Waypoints	Cumulative Time	Fuel Burn	Cumulative Fuel Burn
KIAD							
KORD							

- 5) Estimate Fuel Burn and complete the last two columns in the Navigation Log above.
 Assume Fuel Burn Rate 8 gallons per hour
 Fuel Burn = Time * Fuel Burn Rate
- 6) Select the IFR Low Altitude Chart (upper right button "IFR Low")
 - a. What is Airway between RAMAY and HACKS _____

- b. What is the Minimum Enroute Altitude for this Airway _____
- c. What is a Minimum Enroute Altitude _____
- d. Why is a Minimum Enroute Altitude provided _____

- e. What are the two waypoints between RAMAY AND HACKS that can be used as checkpoints _____ and _____
- f. What is the distance between these waypoint _____ nm
- g. What is the Airway between HACKS and ROD _____
- h. What is the distance between HACKS and ROD _____ nm
- i. What outbound radial from ROD would you set to fly this airway _____ degrees
- j. What type of Navigation Aid is ROD _____
- k. What is the Frequency dialed to tune ROD Navaid _____
- l. What is the next waypoint after ROD _____
- m. What is the inbound radial to this next waypoint _____



- n. As the aircraft flies the STAR it will pass a waypoint WATSN, what *two* VORs (and their outbound radials) can be used to check the flight is over the waypoint. What is the distance from the VOR to the West.

 VOR to the North _____ Outbound Radial _____
 VOR to the West _____ Outbound Radial _____ Distance _____ nm
- o. Switch to IFR LOW chart

The STAR lines the aircraft up for the approach

What type of runway navigation is used _____

(make sure you are looking at the "IFR Low" chart)

What frequency is dialed to use this runway navigation aid _____

SYST 460 Homework

This runway navigation aid also lines up with Terminal Area VOR navigation aid located at the airport. What is the navaid _____ what outbound radial _____ degrees